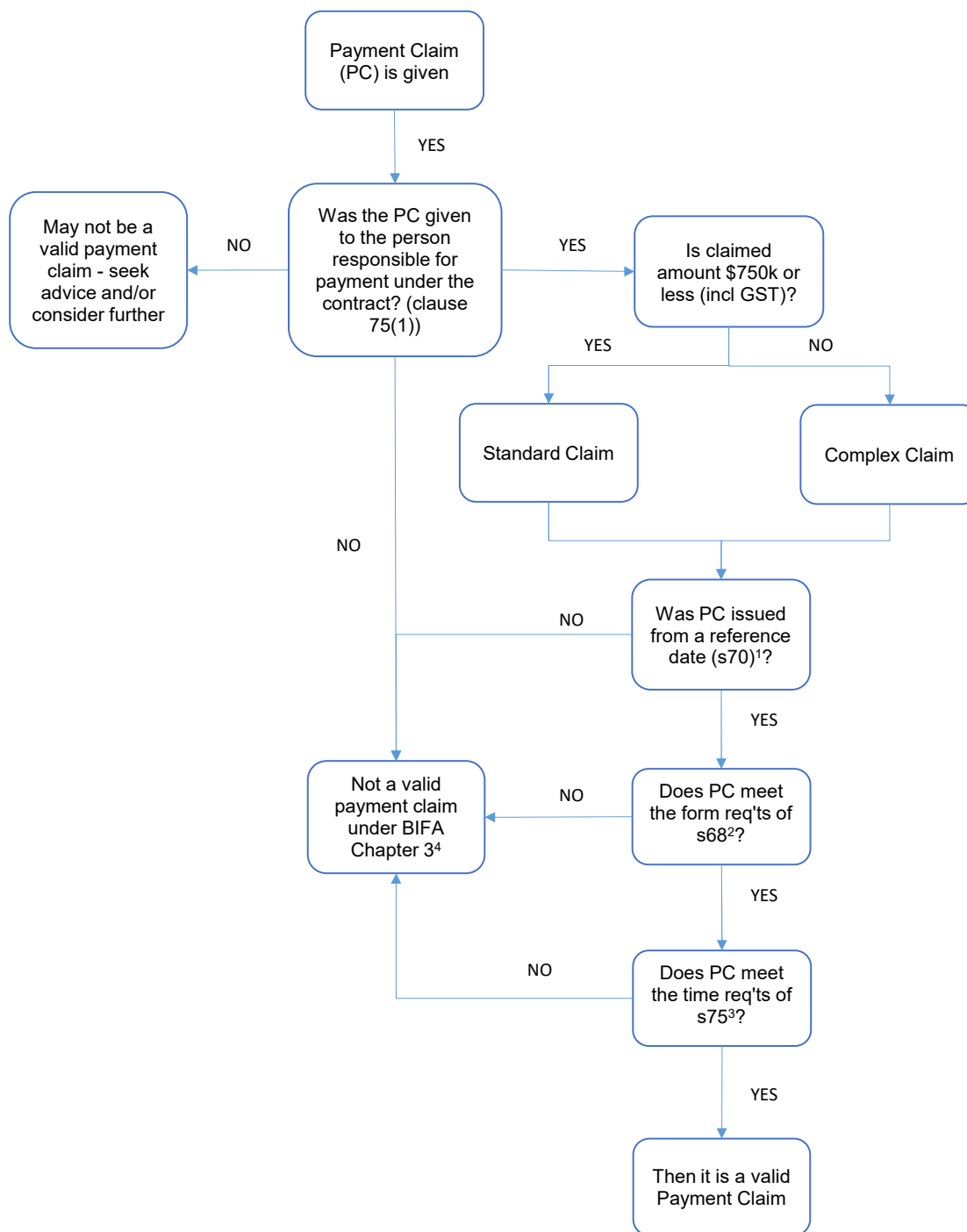


## PAYMENT CLAIMS (PC)



NB: A Supporting Statement must also be included with head contractor payment claims

<sup>1</sup> A Payment Claim must be given on or after a reference date to be valid.

<sup>2</sup> A Payment Claim must be in writing, describe the construction work or related goods/services claimed, state the amount claimed, and include a request for payment.

<sup>3</sup> A Payment Claim must be given within the later of the time provided under the contract or 6 months from when the construction work or related goods/services were provided. If the PC relates to a final claim, it must be given within the later of the time provided under the contract, 6 months from when the construction work or related goods/services were provided or 28 days of the end of the last Defects Liability Period.

<sup>4</sup> However, it may be a valid claim for payment under the contract.